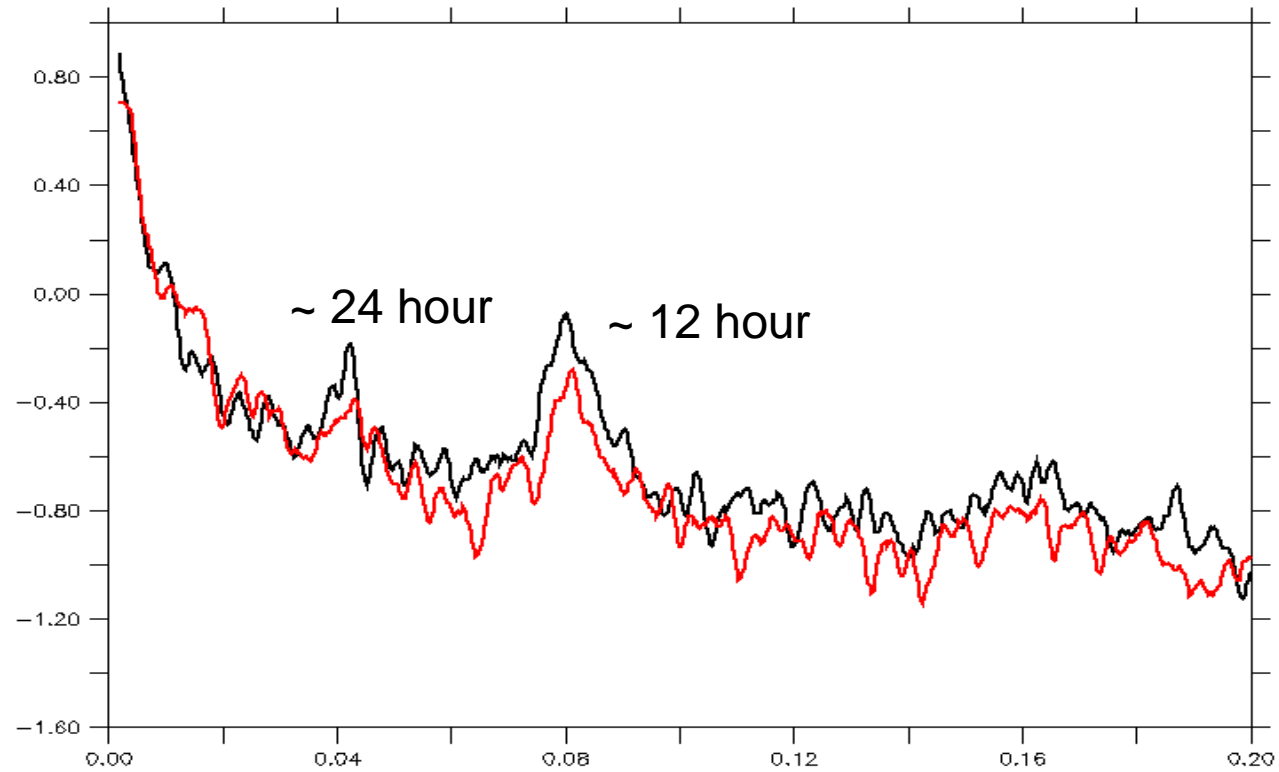


# GROUP - 9

# FFT analysis of Temperature and current data at equator

# FFT of Cuurent (1.5S, 80 E)

U component  
V component

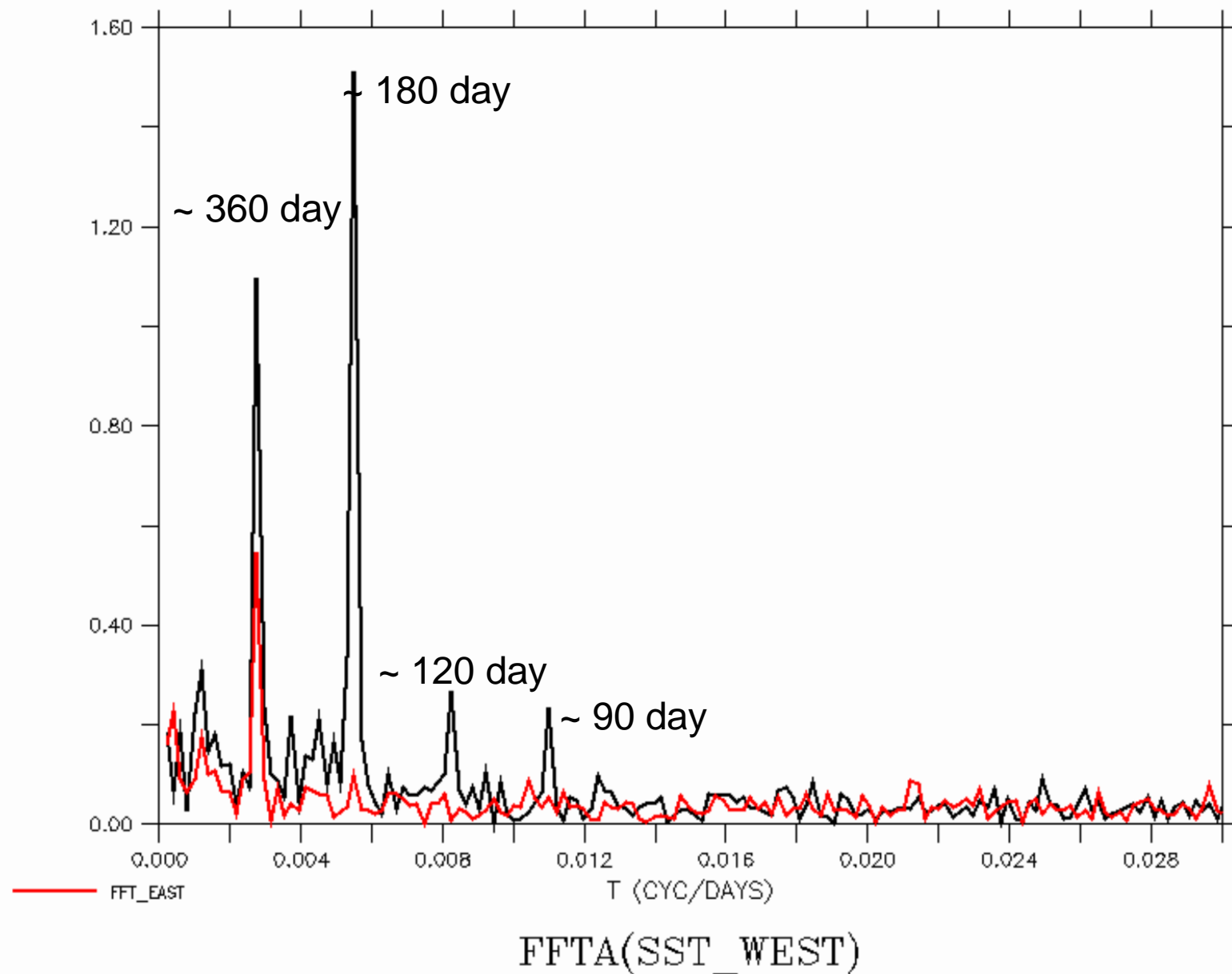


Only 5 month data

# FFT for SST data at western and eastern equatorial Indian ocean

FERRET Ver. 6.96  
NOAA/PMEL THAP  
03-JUL-2018 12:38:39

DATA SET: sst\_eq



# Wavelet analysis of current data at eastern and western part of quator

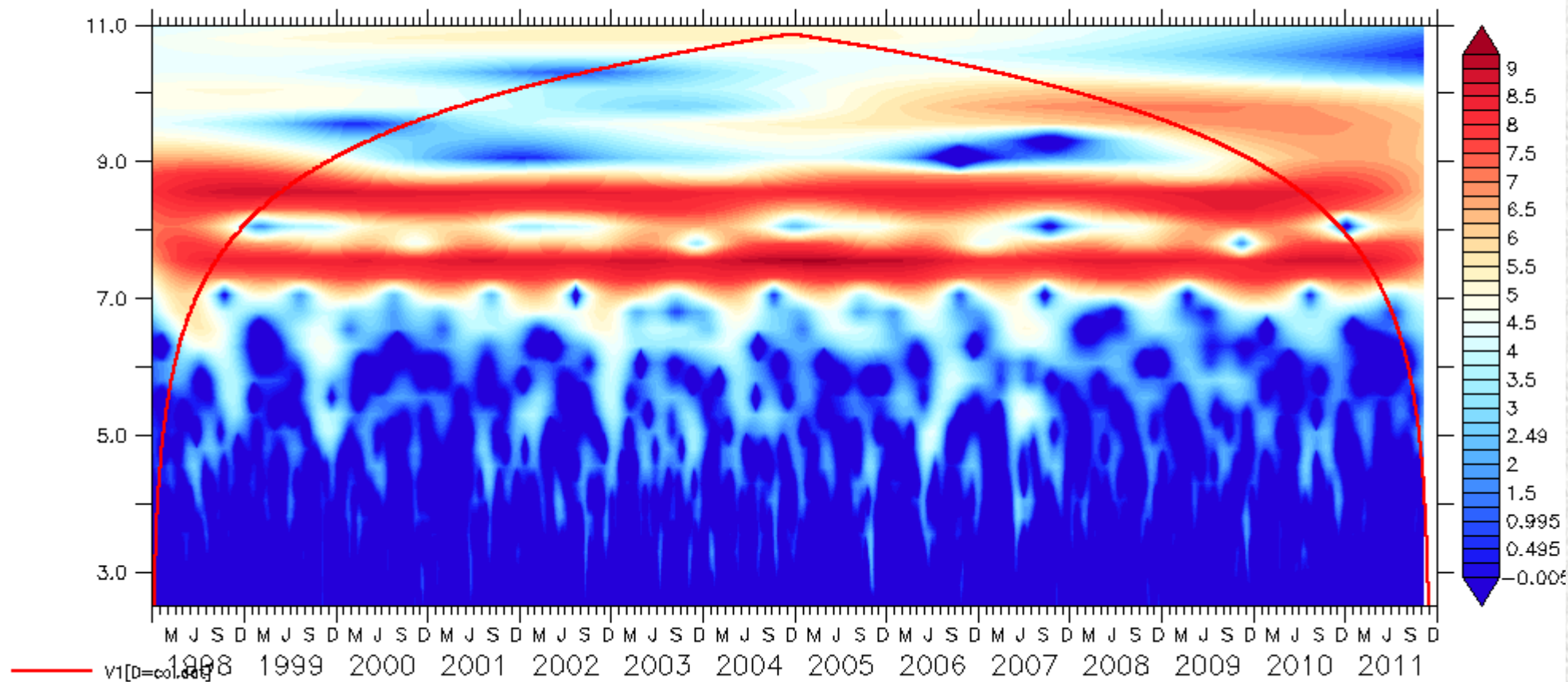
East - *1.5 -2.5 N & 90-95 E*

West - *1.5 -2.5 N & 50-55 E*



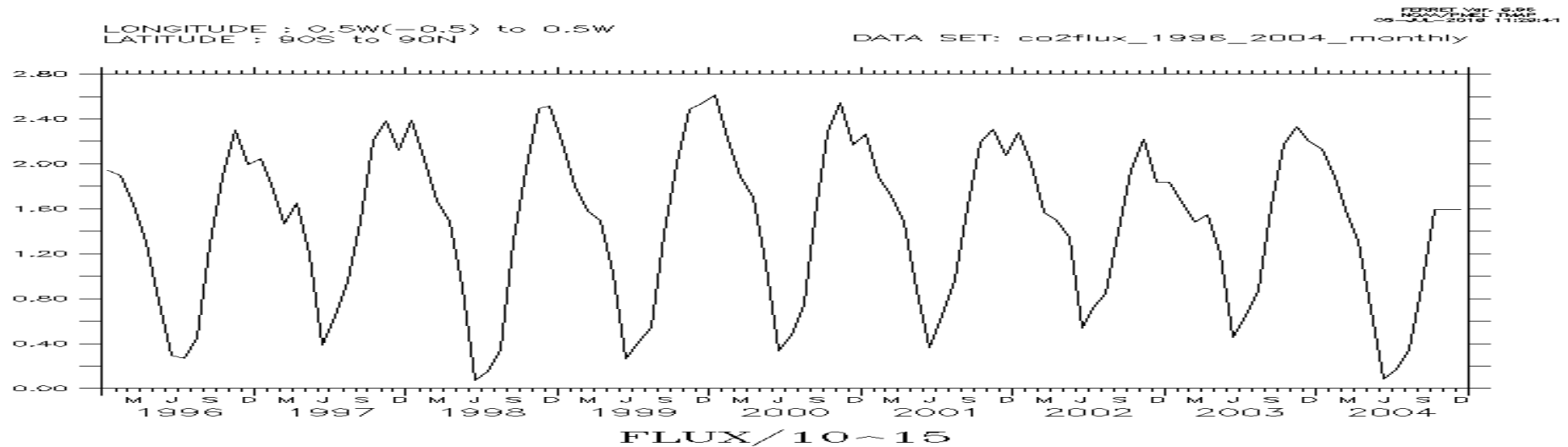


# Wavelet West



# CO2 flux [NINO-3]

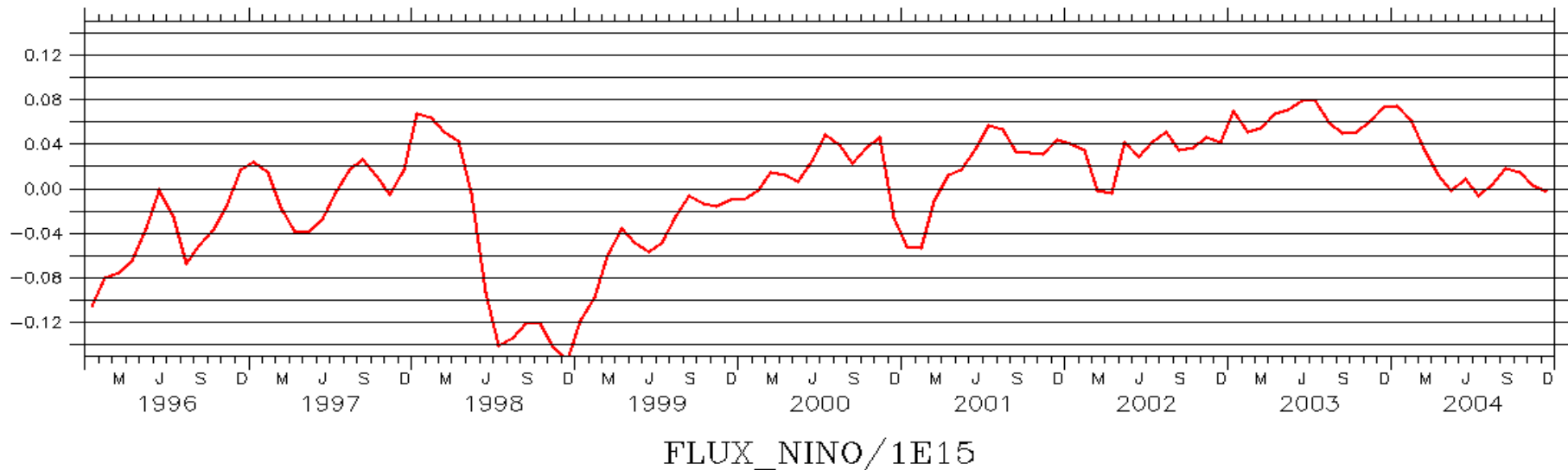
## Annual variation



## Anomaly

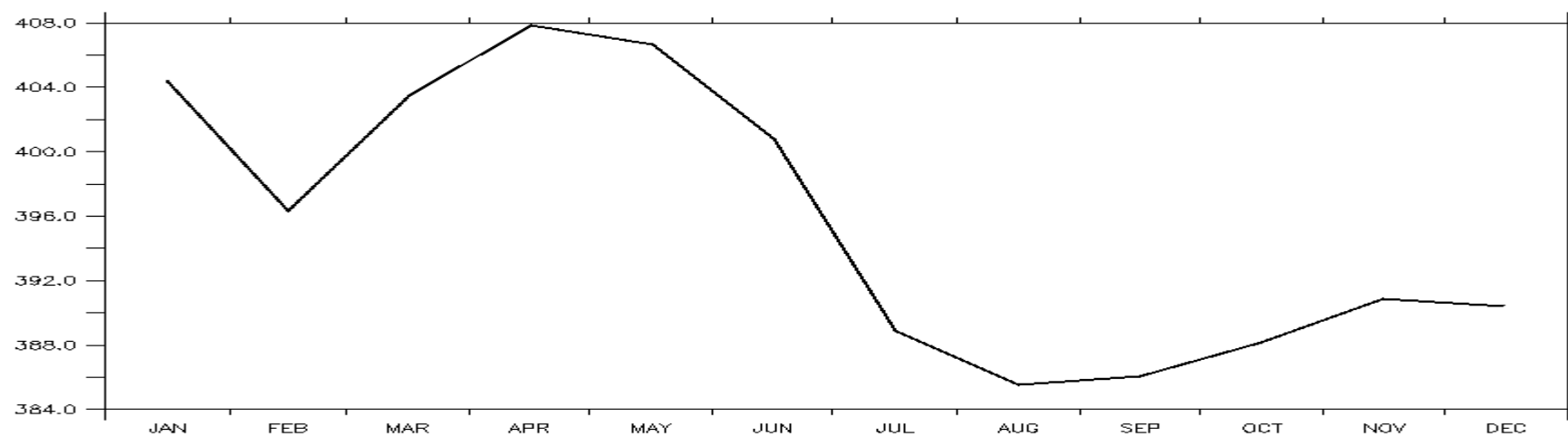
LONGITUDE : 150W to 90W  
LATITUDE : 5S to 5N

FERRET Ver. 8.96  
NOAA/PMEL THAP  
06-JUL-2016 12:04:54



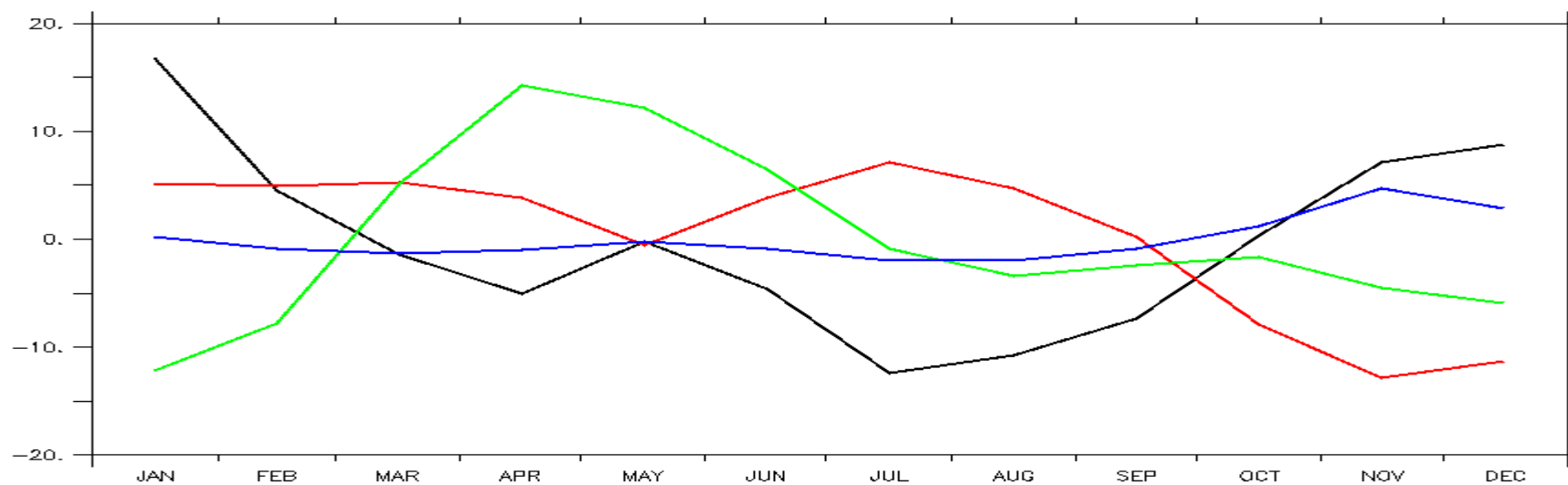


DATA SET: climatology\_all



CONTROL[D=1,GT=MONTH\_REG@MOD]

DATA SET: climatology\_all



PCO2\_CLIM-ALK\_CLIM  
PCO2\_CLIM-TEMP\_CLIM  
PCO2\_CLIM-SALT\_CLIM

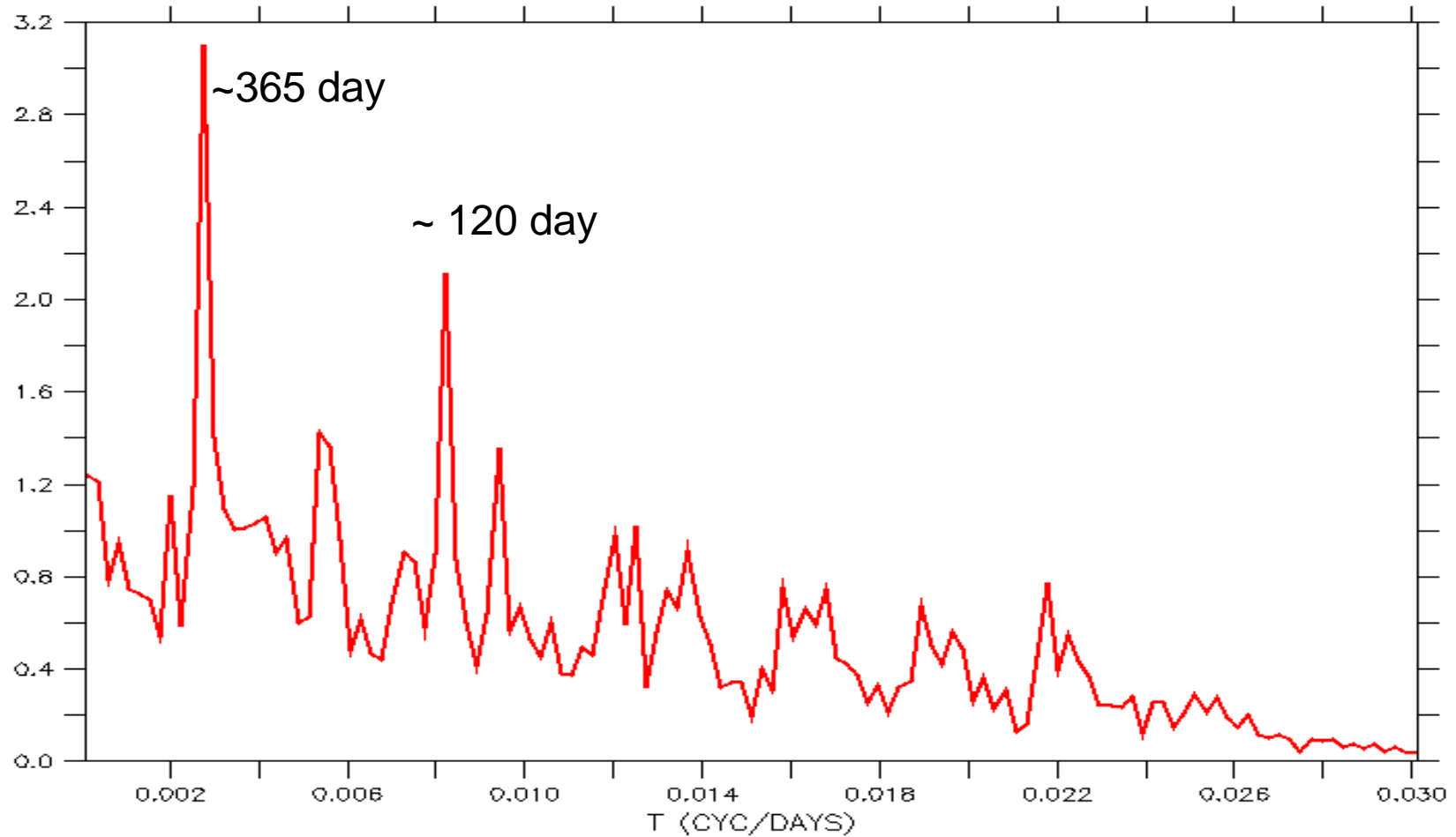
PCO2\_CLIM-DIC\_CLIM

# FFT of meridional velocity (5.5 N and 52.5E, oscar data)

LONGITUDE : 52.5E  
LATITUDE : 5.5N  
Z (m) : 15

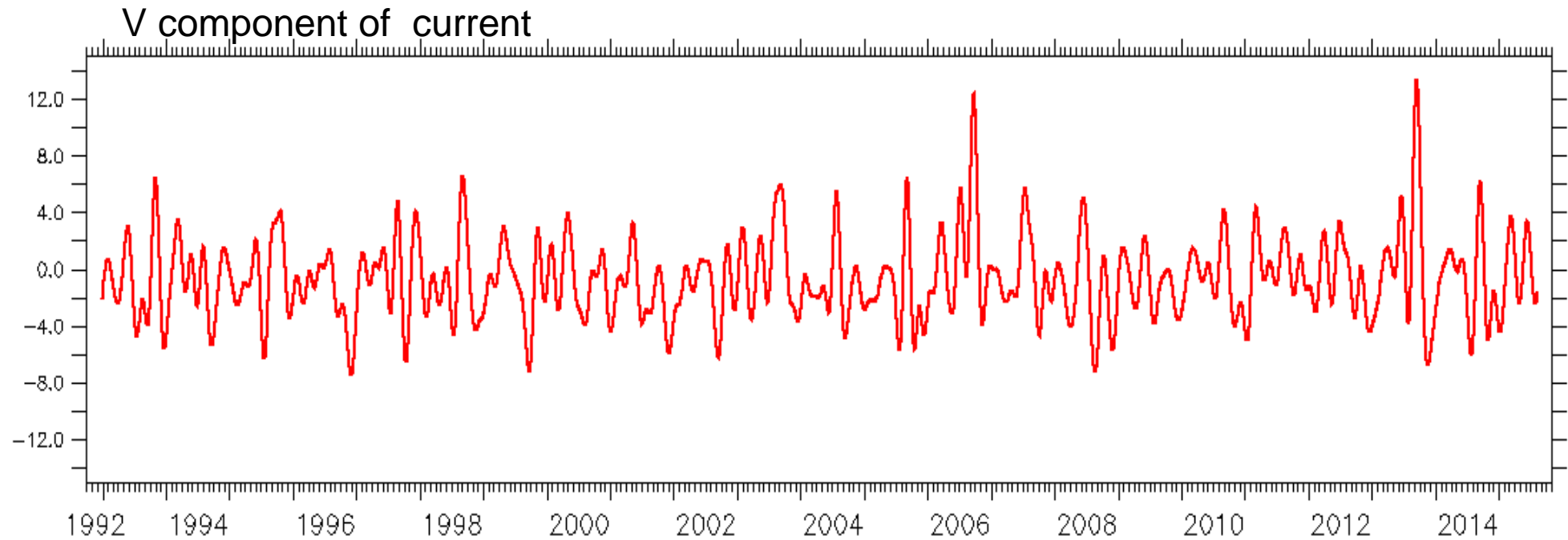
FERRET Ver. 6.96  
NOAA/PMEL TMAP  
14-JUL-2018 17:09:58

DATA SET: oscar\_as

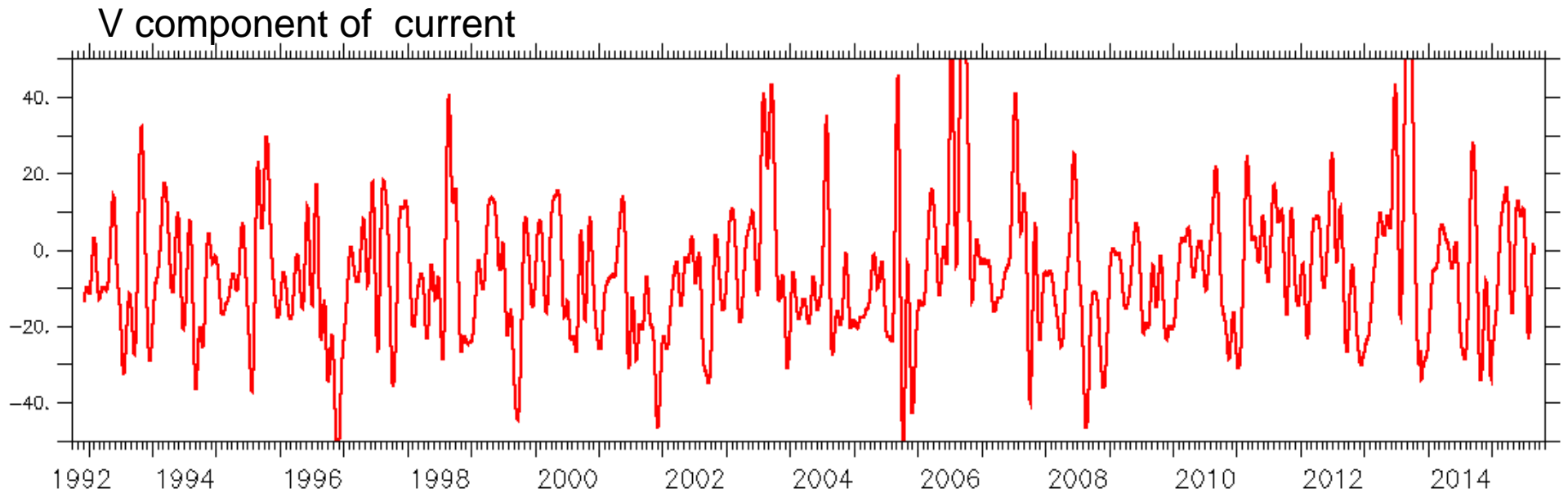


FFTA(V\_WEST) (regrid: 2.38E-04 CYC/DAYS on T@AVE)

# Bandpass (100-140 days )



# Lowpass (100 days )



**THANK YOU**